

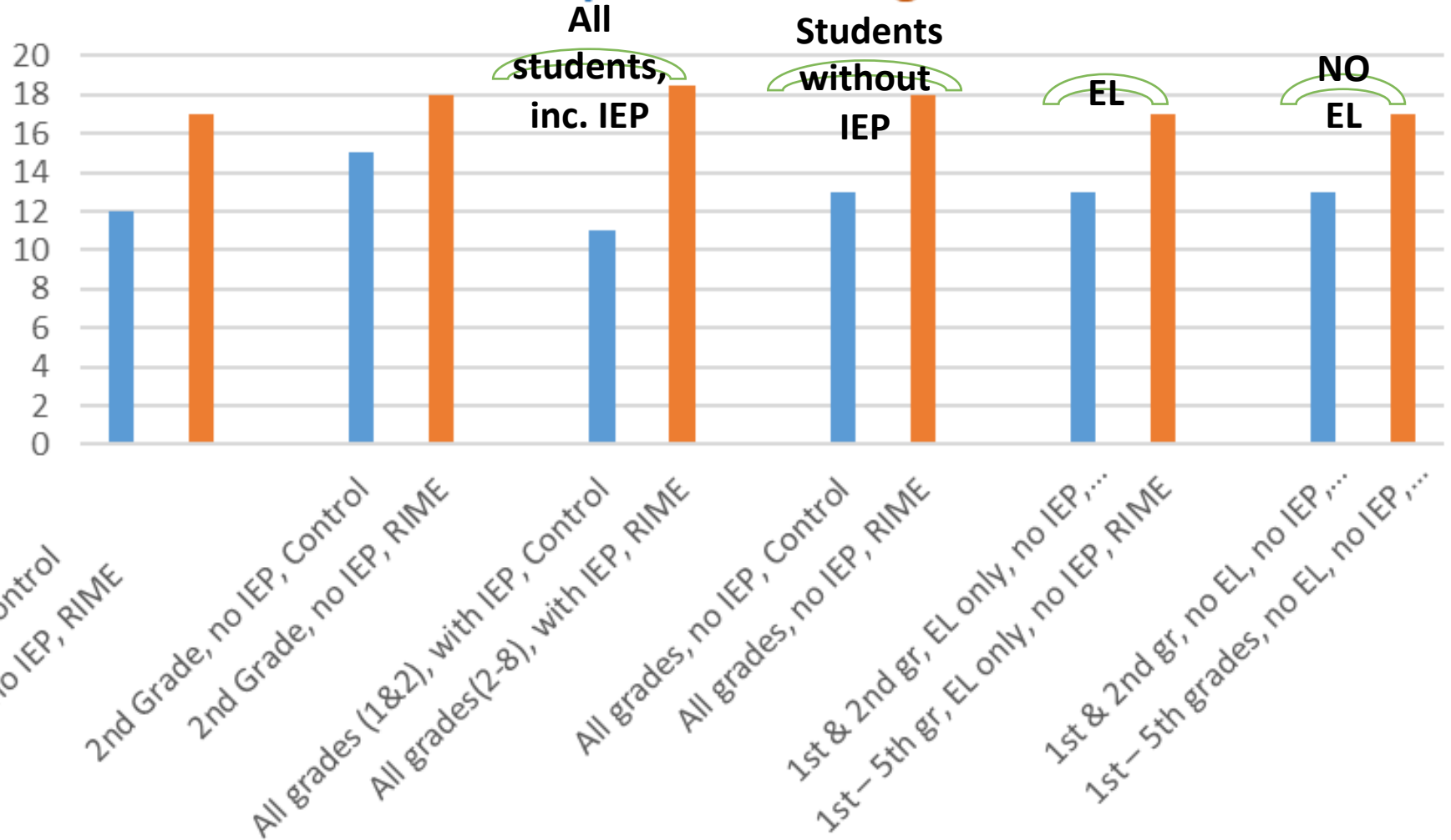
RIME MAGIC

Preliminary Results for Fowler Unified

June 2018

Fowler Unified Improvement Summary in Average Months of Word Recognition per Pre/Post Slossen Scores

Control Group vs RIME Magic



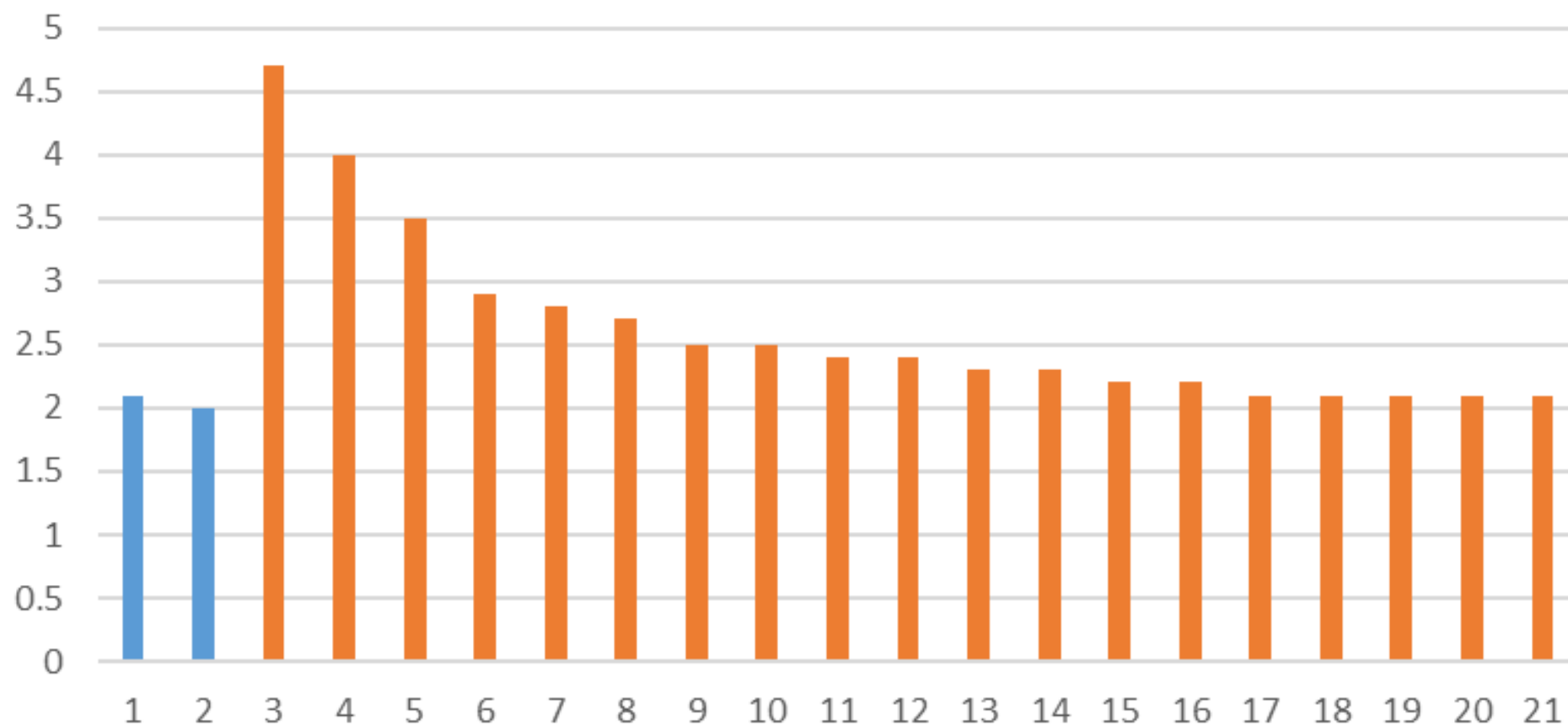
Outliers

Increase by 2 or more Grade Levels in Word Recognition from Pre to Post Slossen Assessment

Control Group - 6% Outliers

RIME Group - 20% Outliers

(11 of 19 with IEP)



Pre/Post Slossen Grade Level Improvement in Word Recognition for the 50 students with IEPs out of 128 total students

Control vs RIME Magic

