

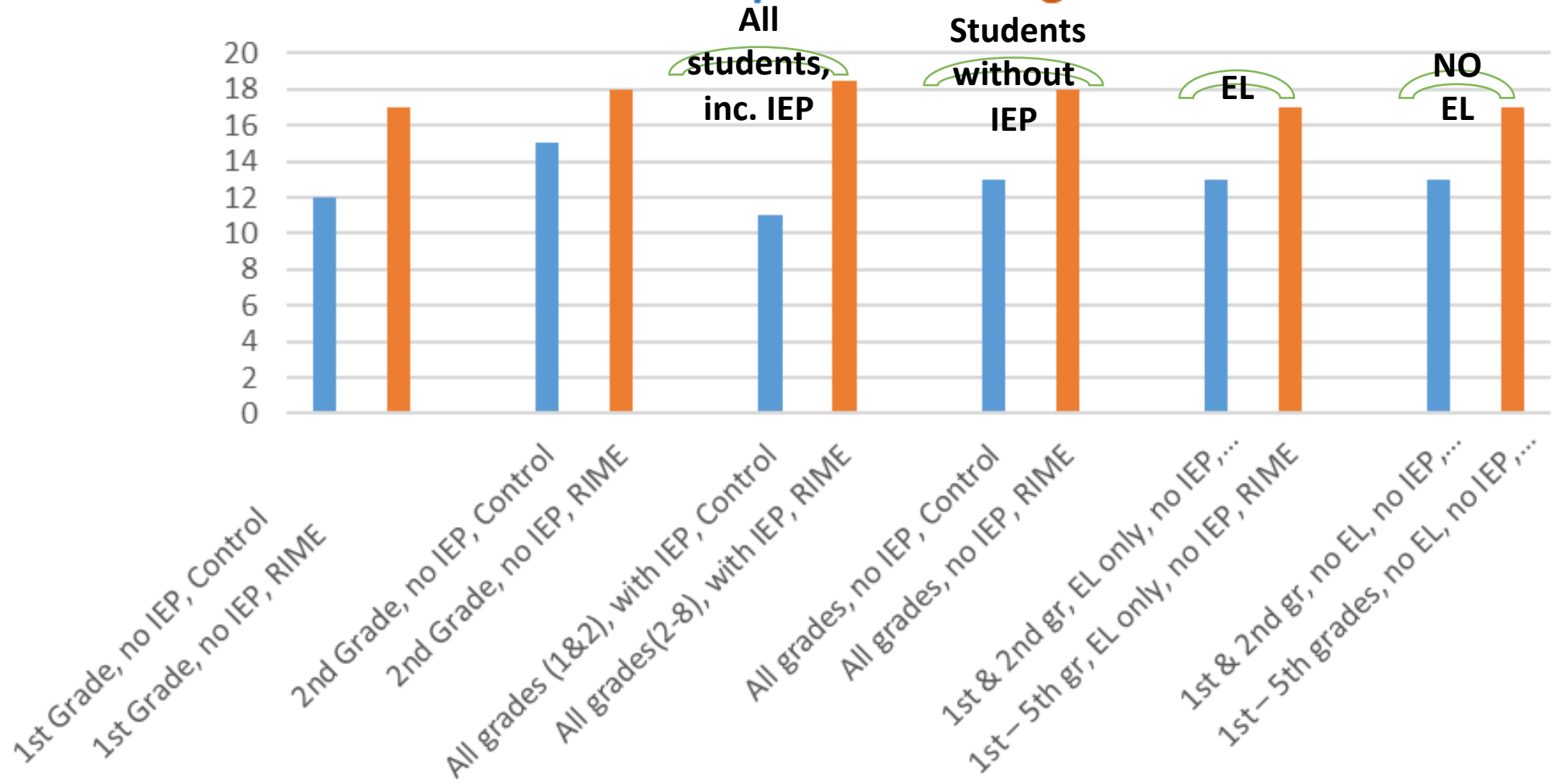
RIME MAGIC

Preliminary Results for Fowler Unified

June 2018

Fowler Unified Improvement Summary in Average Months of Word Recognition per Pre/Post Slossen Scores

Control Group vs RIME Magic



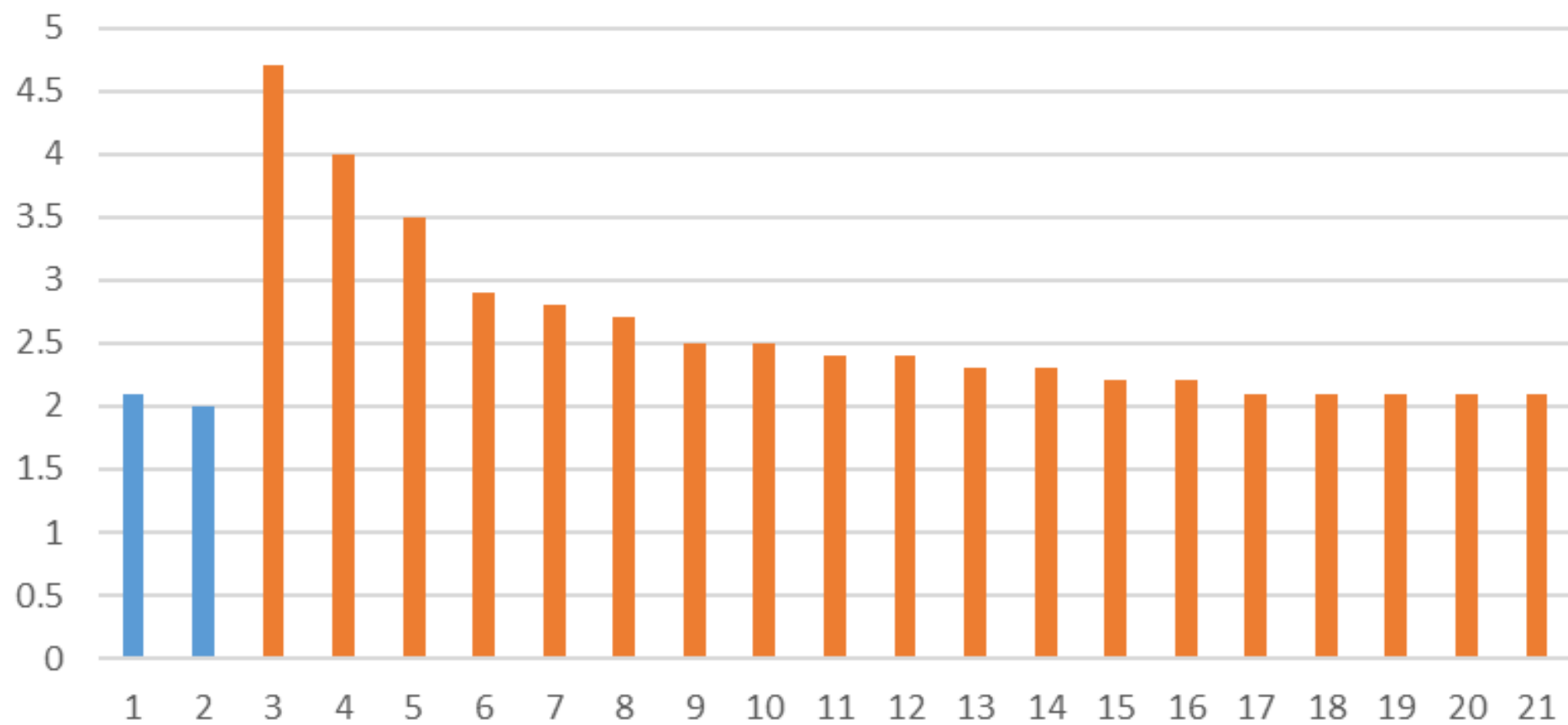
Outliers

Increase by 2 or more Grade Levels in Word Recognition from Pre to Post Slossen Assessment

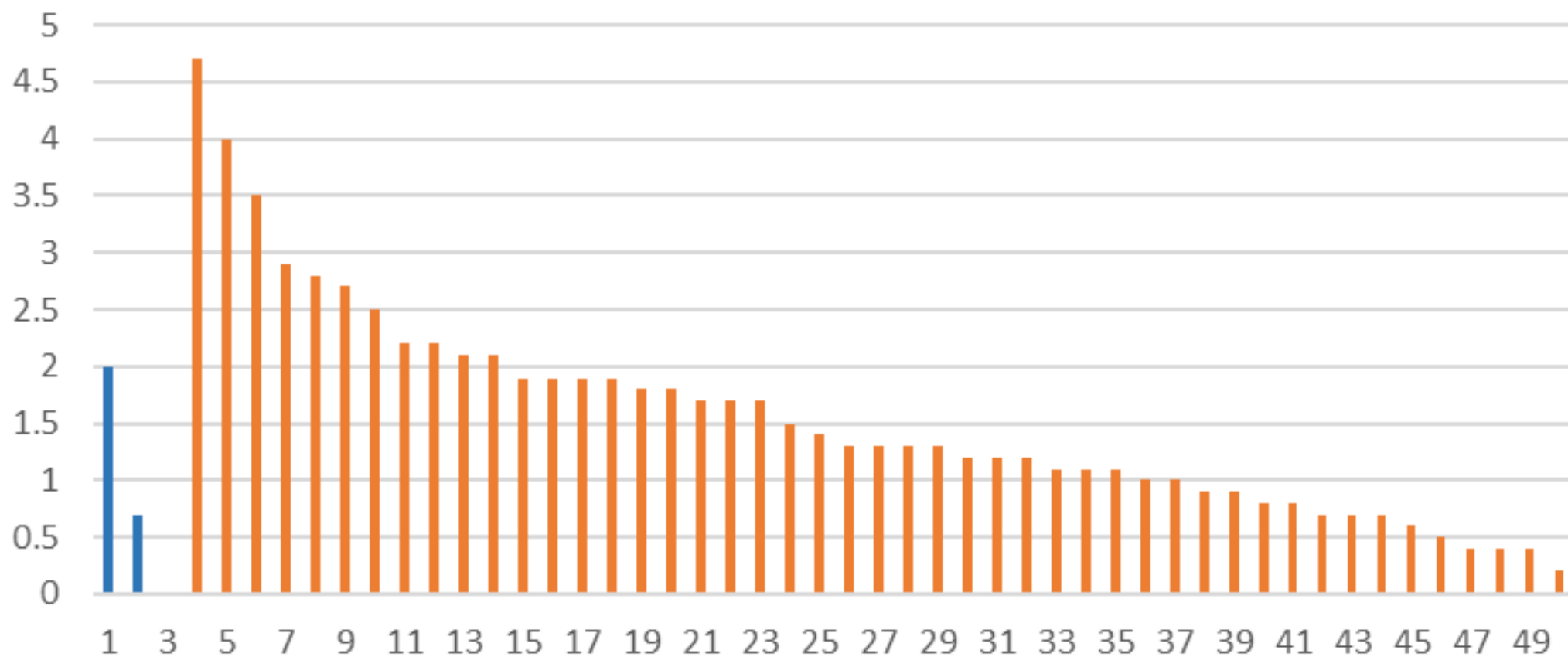
Control Group - 6% Outliers

RIME Group - 20% Outliers

(11 of 19 with IEP)



Pre/Post Slossen Grade Level Improvement in Word
Recognition for the 50 students with IEPs
out of 128 total students
Control vs RIME Magic



RIME MAGIC 1st & 2nd GRADE RESULTS AGAINST CONTROL GROUP

